

Overview

- MH2415 is a 5-port multi-view KVM switch, it supports USB 2.0 HUB. Users can simultaneously monitor the screens from multiple computers on one screen use a set of keyboard and mouse. Control and switch between computers/video sources are very convenient by using the keyboard to select the target computer screen, providing real-time screen updates, which effectively improve the efficiency of real-time monitoring of application scenarios.

Due to the increasing market demand for multi screen display, MH2415 provides rich product functions with diversified operation modes to meet the market expectations of professional fields such as air transportation industry, banking and financial products, game industry and medical industry with real-time monitoring demand, effectively improve work efficiency and reduce cumbersome operation.

Product Picture



MH2415 side view



MH2415 side view

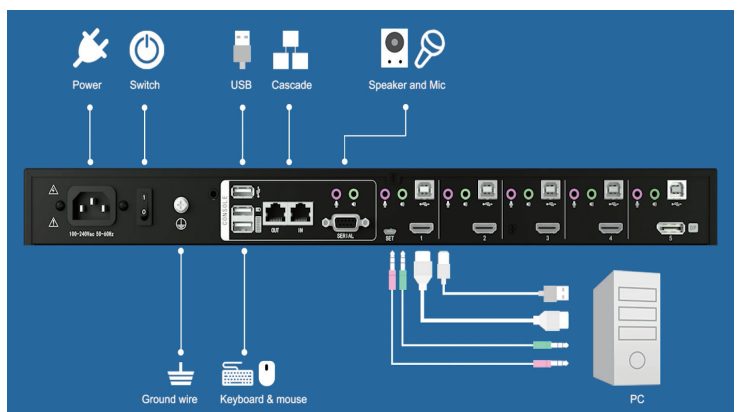
Features

- A single multi-view console controls up to 5 video sources on one screen. Support display modes including Quad View, Triple View, Dual View, Full Screen, and Picture in Picture (PiP).
- Support dual output on console side – a multi-view output and a full screen output.
- Switch the display mode and computer port via front panel pushbuttons, OSD, keyboard/mouse hotkeys.
- Easily resize the screen view in Triple View mode, Dual View mode, and Picture in Picture (PiP) mode.
- Supports reposition the screen view in PiP mode.

Features

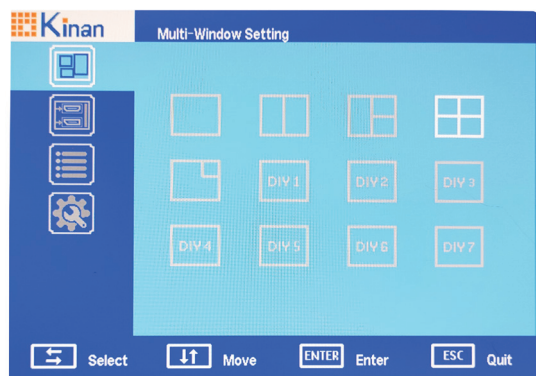
- Select optimum EDID settings to ensure high-quality resolution between different screens and provide a high-quality picture display.
- Daisy Chain Control – Controls up to 1 additional MH2415 from a single console.
- Cascade up to 2 levels – Controls up to 20 computers (up to 5x4 multi-view mode).
- Supports PCM2, 5.1, 7.1 channel, Dolby 5.1 and DTS5.1 audio output and Mic input.
- Supports USB HUB 2.0
- Supports HDMI digital display-fully compatible with HDMI2.0 and HDCP, whether it is in single-screen mode or multi-screen mode, resolutions of all window view up to 4K (3840x2160@60Hz), YCbCr4:4:4
- Boundless switching in the multi-screen mode – simply move the mouse cursor across windows and switch automatically.
- Mult-platform compatible – Windows, Linux, Mac, Unix
- Compatible with wireless USB keyboards and mice of major well-known brands, and multimedia USB keyboards (PC, Mac, and Sun).
- Complete keyboard and mouse signal simulation to ensure error-free power-on and switching.
- Hot pluggable-you can add or remove servers at any time without turning off the power.

Connection Diagram



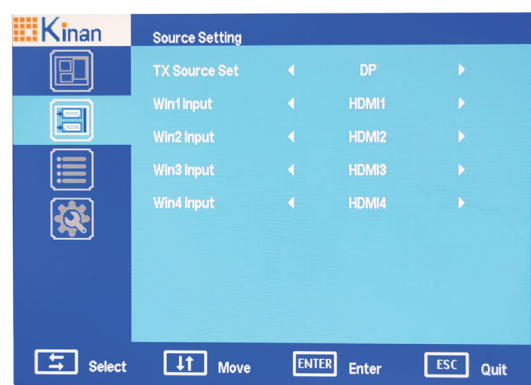
OSD Operation

1. Multi Window Setup



In this menu, you can switch display modes, the MH2415 supports display modes including Quad View, Triple View, Dual View, Full Screen, and Picture in Picture (PiP).

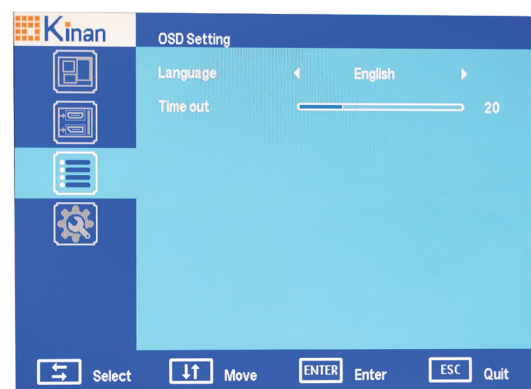
2. Signal Settings



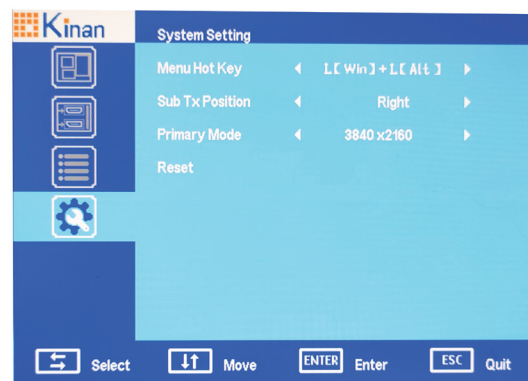
- 1) Loop out source selection: select the port displayed in loop out
- 2) Display 1-4 input: Select the input signal source of each display.

3. Menu setting

In this menu, you can change the display language and display time of the OSD.



4. System Setting



1. Menu hotkey selection: change keyboard hotkey
2. Loop-out position setting: change the relative position of the loop-out display screen and the main screen
3. Best resolution: set the best resolution of each signal source
4. Reset: restore the device to factory settings

Display Modes

You can view multiple computers connected to the MH2415 in different layouts on the same screen by setting the display mode. This section introduces you to different display modes, and ways of switching to them. Note: In an MH2415 system, the Display connected to OUT1 supports full-screen mode only or displays the same contents of the display that connected to OUT2.

Full Screen



Dual View



Triple View



Quad View

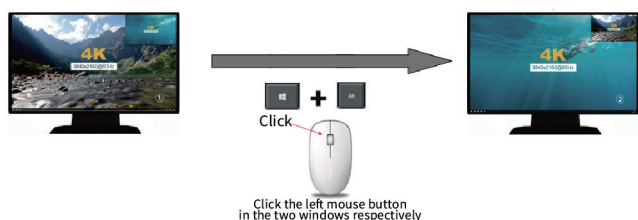


Picture in Picture (PiP)



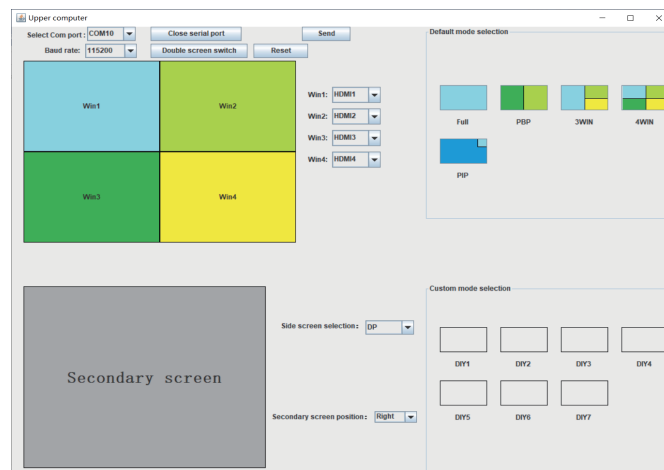
Mouse switch

In the multi-screen mode, you can press and hold the hot key (the default is [Win] + [Alt]) and then respectively double-click the left mouse button in any two windows to swap the display screens.



PC management software (optional)

MH2415 can be used for screen switching, mode selection and customization through the host computer management software. Display mode, the host computer software provides rich functions, which can further enhance the user experience.



Specifications

Model No.			MH2415
Computer Connections			5
Port Selection			Front panel pushbuttons, keyboard hotkeys, mouse wheel, On-Screen Display (OSD)
Display Mode			Quad View, Triple View, Dual View, Full Screen, Picture in Picture (PiP)
Connectors	Console Ports	Display	2 * HDMI type A
		Keyboard/ Mouse	2x USB type A (White)
		Mic	1x Min Stereo Audio Jack (Pink)
		Speaker	2x Min Stereo Audio Jack (Green)
	KVM Ports	Display	4 * HDMI type A / 1 * DisplayPort
		Keyboard/ Mouse	5x USB type (White)
		Mic	5x Min Stereo Audio Jack (Pink)
		Speaker	5x Min Stereo Audio Jack (Green)
	USB2.0 Port		2x USB type A (White)
	Upgrade Port		1 * Micro-USB
Switch	Selected	5x Push buttons	
LEDs	Online	5 * (Red)	
	Selected	5 * (Green)	
Input Power Rating			100V-240Vac, 50-60Hz, <1.5A
Video			3840×2160 @ 60 Hz
Power Consumption			10W
Environmental	Operating Temperature		0-40 C
	Storage Temperature		-20-60°C
	Humidity		0-80%RH,Non-condensing
Physical Properties	Housing		Metal
	Weight		2.35 kg
	Dimensions (L x W x H)		440 mm *166 mm *44mm